



# Product Overview 2011



# Welcome to IKA®

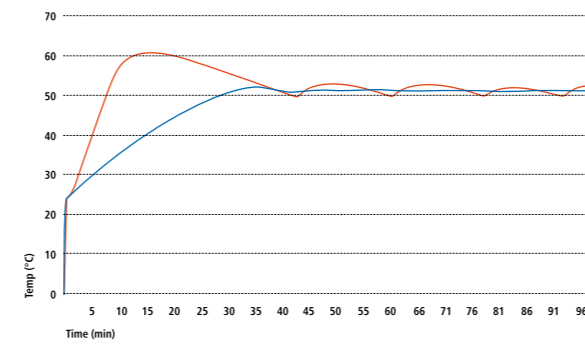


IKA®-Werke GmbH & Co. KG in Staufen, Germany can now look back on a century of history.

The company, which was founded in 1910 as a distributor for pharmacies and hospitals, relocated from bombed-out Cologne to Staufen in 1942. There it quickly became the global market leader for laboratory technology as well as dispersing, stirring, and kneading machines. Today, IKA® employs over 600 people at six different locations on four continents.

IKA® laboratory technology offers a vast spectrum of innovative devices for numerous applications in research and development. For mixing, tempering, distilling or crushing, market leaders in varying fields of application rely on IKA®'s innovative and proven technology.

For more information, please see:  
[www.ika.com](http://www.ika.com)



### Heating rate of water (500 ml)

Two temperature control modes possible:  
- PI mode for accurate temperature control without overshootings  
- Two-point mode for maximum heating rate

### Self-monitoring of all safety-relevant components

Guarantees safety in the event of a malfunction.

### Adjustable safety circuit, conforms to standards

The flashpoint of the medium will not be overshoot. Prevents accidental changes of the safety temperature.

# INTEGRATED SAFETY

IKA® magnetic stirrers adhere to the requirements set forth by the norms **DIN IEC EN 61010-1**, **DIN IEC EN 61010-2-010**, **DIN EN IEC 61010-2-051**  
- tested and certified by UL International (see certification number) - as well as **DIN IEC EN 61326-1**.

The IKA® RCT basic fulfills, in all areas, the required safety regulations for laboratory equipment. Of course, all of our products conform to CE certification.



### Digital display

Enables comparison of the set and actual temperatures as well as the stirring speed. Monitoring of set values is also possible from a distance because of the large easily read display.

### Precise temperature control

The set temperature is reached quickly and held stable.



### Two independent control circuits

The set temperature values are held constant in the event of a malfunction of one control circuit.

# Magnetic stirrers with heating

Please find required accessories on [www.ika.com](http://www.ika.com)



## ETS-D5

Electronic contact thermometer for perfect temperature control in the medium.

- Temperature measuring range from - 50 – 450 °C
- Resolution / setting accuracy: 0,1 K
- Control deviation: ± 0,5 K
- Measuring accuracy: ± 0,2 K (+ sensor tolerance PT 1000)
- Incl. measuring sensor H 62.51
- Connection: DIN 12878 class 2
- Optimized PID regulation and RESET function

Ident. No. 3378000

## Contact thermometer bushing

Bushing according to DIN 12878 for connecting a digital contact thermometer such as an ETS-D5 recommended.

## Ceramic heating plate

Excellent chemical resistance to acids, bases, and solvents.

## Digital display

Precise temperature control thanks to a digital display.



## C-MAG HS 7 IKAMAG®

New magnetic stirrer with heating and a glass ceramic heating plate, which offers excellent chemical resistance.

- Fixed safety circuit of 550 °C
- Hot Top indicator to prevent burns



## C-MAG HS 10 IKAMAG®

### Technical data

Stirring quantity (H <sub>2</sub> O)	20 l
Speed display	digital
Speed range	50 – 1.500 rpm
Heating function	
Heat output	600 W
Temperature range	RT – 310 °C
Setting accuracy	± 1 K
Safety circuit	50 – 360 °C
Control accuracy with sensor	PT 1000 ± 1 K / ETS-D5 ± 0,5 K
<b>Heating plate</b>	
Material	aluminium alloy
Dimensions	Ø 135 mm
<b>General data</b>	
Dimensions (W x D x H)	160 x 270 x 85 mm
Weight	2,5 kg
Ident. No.	3810000

## RCT basic safety control IKAMAG®

Stirring quantity (H <sub>2</sub> O)	20 l
Speed display	digital
Speed range	50 – 1.500 rpm
Heating function	
Heat output	600 W
Temperature range	RT – 310 °C
Setting accuracy	± 1 K
Safety circuit	50 – 360 °C
Control accuracy with sensor	PT 1000 ± 1 K / ETS-D5 ± 0,5 K
<b>Heating plate</b>	
Material	aluminium alloy
Dimensions	Ø 135 mm
<b>General data</b>	
Dimensions (W x D x H)	160 x 270 x 85 mm
Weight	2,5 kg
Ident. No.	3810000

## RET basic safety control IKAMAG®

Stirring quantity (H <sub>2</sub> O)	20 l
Speed display	digital
Speed range	50 – 1.700 rpm
Heating function	
Heat output	600 W
Temperature range	RT – 340 °C
Setting accuracy	± 1 K
Safety circuit	50 – 360 °C
Control accuracy with sensor	PT 1000 ± 1 K / ETS-D5 ± 0,5 K
<b>Heating plate</b>	
Material	stainless steel (AISI 304)
Dimensions	Ø 135 mm
<b>General data</b>	
Dimensions (W x D x H)	160 x 270 x 95 mm
Weight	2,5 kg
Ident. No.	3622000

## RET control/t safety control IKAMAG®

Stirring quantity (H <sub>2</sub> O)	20 l
Speed display	digital
Speed range	0 – 1.200 rpm
Heating function	
Heat output	600 W
Temperature range	RT – 340 °C
Setting accuracy	0,5 K (< 100°C) 1K (> 100°C)
Safety circuit	50 – 350 °C
Control accuracy with sensor	± 0,2 K
<b>Heating plate</b>	
Material	stainless steel (AISI 304)
Dimensions	Ø 135 mm
<b>General data</b>	
Dimensions (W x D x H)	160 x 280 x 97 mm
Weight	2,8 kg
Ident. No.	3964000

## RH basic 2 IKAMAG®

Stirring quantity (H <sub>2</sub> O)	10 l
Speed display	scale (0 - 6)
Speed range	100 – 2.000 rpm
Heating function	
Heat output	400 W
Temperature range	RT – 320 °C
Setting accuracy	± 10 K
Safety circuit	400 °C (fixed)
Control accuracy with sensor	–
<b>Heating plate</b>	
Material	stainless steel (AISI 304)
Dimensions	Ø 125 mm
<b>General data</b>	
Dimensions (W x D x H)	168 x 220 x 105 mm
Weight	2,4 kg
Ident. No.	3339000

## C-MAG HS 4 IKAMAG®

Stirring quantity (H <sub>2</sub> O)	5 l
Speed display	scale (0 - 6)
Speed range	100 – 1.500 rpm
Heating function	
Heat output	250 W
Temperature range	50 – 500 °C
Setting accuracy	± 10 K
Safety circuit	550 °C (fixed)
Control accuracy with sensor	–
<b>Heating plate</b>	
Material	glass ceramic
Dimensions	100 x 100 mm
<b>General data</b>	
Dimensions (W x D x H)	150 x 260 x 105 mm
Weight	3 kg
Ident. No.	3581000

Stirring quantity (H <sub>2</sub> O)	10 l
Speed display	scale (0 - 6)
Speed range	100 – 1.500 rpm
Heating function	
Heat output	1.000 W
Temperature range	50 – 500 °C
Setting accuracy	± 10 K
Safety circuit	550 °C (fixed)
Control accuracy with sensor	ETS-D5 ± 0,5 K
<b>Heating plate</b>	
Material	glass ceramic
Dimensions	180 x 180 mm
<b>General data</b>	
Dimensions (W x D x H)	220 x 330 x 105 mm
Weight	5 kg
Ident. No.	3581200

Stirring quantity (H <sub>2</sub> O)	15 l
Speed display	scale (0 - 6)
Speed range	100 – 1.500 rpm
Heating function	
Heat output	1.500 W
Temperature range	50 – 500 °C
Setting accuracy	± 10 K
Safety circuit	550 °C (fixed)
Control accuracy with sensor	ETS-D5 ± 0,5 K
<b>Heating plate</b>	
Material	glass ceramic
Dimensions	260 x 260 mm
<b>General data</b>	
Dimensions (W x D x H)	300 x 415 x 105 mm
Weight	6 kg
Ident. No.	3581400

# Magnetic stirrers with and without heating

Please find required accessories on [www.ika.com](http://www.ika.com)

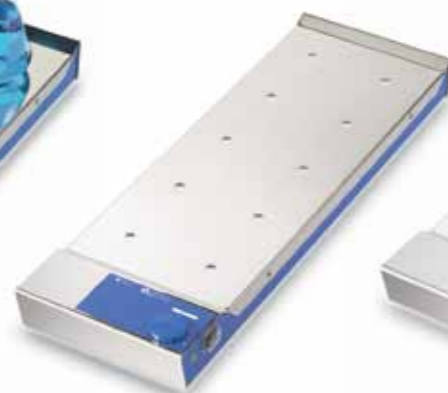


## Simultaneously operating stirrers

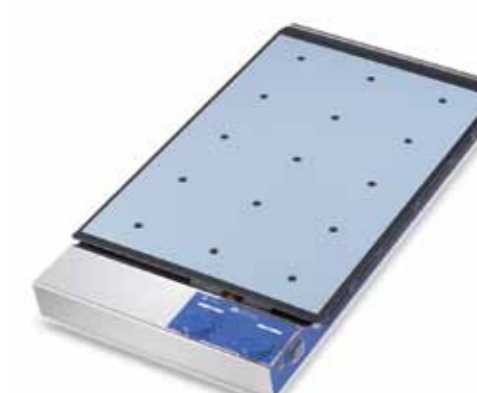
Absolute consistency of sample conditions for the individual samples.

## Silicone heating foil

For steady temperatures throughout the entire set-up plate.



RT 10 power IKAMAG®



### Technical data

Stirring positions	5
Max. stirring quantity per stirrer (H <sub>2</sub> O)	0,4 l
Speed display	scale (1 – 10)
Speed range	0 – 1.100 rpm
Deviation for individual stirring positions	5%

### Heating function

Heat output	–
Temperature range (surface)	–
Max. temperature medium	–
Temperature consistency in the medium	–

### Set-up plate

Material	stainless steel (AISI 304)
Dimensions	120 x 450 mm

### General data

Dimensions (W x D x H)	122 x 552 x 65 mm
Weight	2,3 kg
Ident. No.	2930200

RO 5 power IKAMAG®

Stirring positions	5
Max. stirring quantity per stirrer (H <sub>2</sub> O)	0,4 l
Speed display	scale (1 – 10)
Speed range	0 – 1.100 rpm
Deviation for individual stirring positions	5%

Heat output	–
Temperature range (surface)	–
Max. temperature medium	–
Temperature consistency in the medium	–

Material	stainless steel (AISI 304)
Dimensions	120 x 450 mm

Dimensions (W x D x H)	122 x 552 x 65 mm
Weight	2,3 kg
Ident. No.	2930200

RO 10 power IKAMAG®

Stirring positions	10
Max. stirring quantity per stirrer (H <sub>2</sub> O)	0,4 l
Speed display	scale (1 – 10)
Speed range	0 – 1.100 rpm
Deviation for individual stirring positions	5%

Heat output	–
Temperature range (surface)	–
Max. temperature medium	–
Temperature consistency in the medium	–

Material	stainless steel (AISI 304)
Dimensions	180 x 450 mm

Dimensions (W x D x H)	182 x 552 x 65 mm
Weight	3,2 kg
Ident. No.	2930400

RO 15 power IKAMAG®

Stirring positions	15
Max. stirring quantity per stirrer (H <sub>2</sub> O)	0,4 l
Speed display	scale (1 – 10)
Speed range	0 – 1.100 rpm
Deviation for individual stirring positions	5%

Heat output	–
Temperature range (surface)	–
Max. temperature medium	–
Temperature consistency in the medium	–

Material	stainless steel (AISI 304)
Dimensions	270 x 450 mm

Dimensions (W x D x H)	272 x 552 x 65 mm
Weight	4,7 kg
Ident. No.	2930600

RT 5 power IKAMAG®

Stirring positions	5
Max. stirring quantity per stirrer (H <sub>2</sub> O)	0,4 l
Speed display	scale (1 – 10)
Speed range	0 – 1.100 rpm
Deviation for individual stirring positions	5%

Heat output	175 W
Temperature range (surface)	RT – 120 °C
Max. temperature medium	70 °C
Temperature consistency in the medium	± 2 K

Material	silicone
Dimensions	120 x 450 mm

Dimensions (W x D x H)	138 x 552 x 65 mm
Weight	3 kg
Ident. No.	2930300

RT 10 power IKAMAG®

Stirring positions	10
Max. stirring quantity per stirrer (H <sub>2</sub> O)	0,4 l
Speed display	scale (1 – 10)
Speed range	0 – 1.100 rpm
Deviation for individual stirring positions	5%

Heat output	375 W
Temperature range (surface)	RT – 120 °C
Max. temperature medium	70 °C
Temperature consistency in the medium	± 2 K

Material	silicone
Dimensions	180 x 450 mm

Dimensions (W x D x H)	198 x 552 x 65 mm
Weight	4,2 kg
Ident. No.	2930500

RT 15 power IKAMAG®

Stirring positions	15
Max. stirring quantity per stirrer (H <sub>2</sub> O)	0,4 l
Speed display	scale (1 – 10)
Speed range	0 – 1.100 rpm
Deviation for individual stirring positions	5%

Heat output	580 W
Temperature range (surface)	RT – 120 °C
Max. temperature medium	70 °C
Temperature consistency in the medium	± 2 K

Material	silicone
Dimensions	270 x 450 mm

Dimensions (W x D x H)	288 x 552 x 65 mm
Weight	6 kg
Ident. No.	2930700

# Magnetic stirrers without heating

See more designs of the lab disc, big squid and color squid on [www.ika.com](http://www.ika.com)



**Glass plate**  
Excellent chemical resistance to acids, bases, and solvents.

**High-power motor**  
Electronically controlled motor for a high capacity and high speed range.

**Digital display**  
Enables precise setting of speed.

## Ultra-flat

The modern magnet coil technology enables a height of only 12 mm.

## Change of rotating direction

For a better mixing of the medium, the rotating direction can be automatically changed every 30 seconds.



## big squid IKAMAG®

1,5 l

3 / 2 W

digital

0 – 2.500 rpm

-

30 x 8 mm

glass

Ø 160 mm

180 x 195 x 40 mm

0,7 kg

IP 54

3672000

## color squid IKAMAG®

1 l

3 / 2 W

digital

0 – 2.500 rpm

-

30 x 8 mm

glass

Ø 115 mm

145 x 160 x 45 mm

0,54 kg

IP 54

3671000

## lab disc IKAMAG® white

0,8 l

5 / 3 W

-

15 – 1.500 rpm

every 30 seconds

30 x 8 mm

polyester

Ø 100 mm

117 x 180 x 12 mm

0,3 kg

IP 65

3907500

## Mini MR standard IKAMAG®

1 l

3 / 2 W

-

0 – 2.500 rpm

-

30 x 8 mm

polyester

115 x 115 mm

114 x 127 x 37 mm

0,25 kg

IP 42

3674000

## topolino IKAMAG®

0,25 l

1 / 0,8 W

-

300 – 1.800 rpm

-

30 x 8 mm

PP

Ø 80 mm

95 x 115 x 37 mm

0,32 kg

IP 21

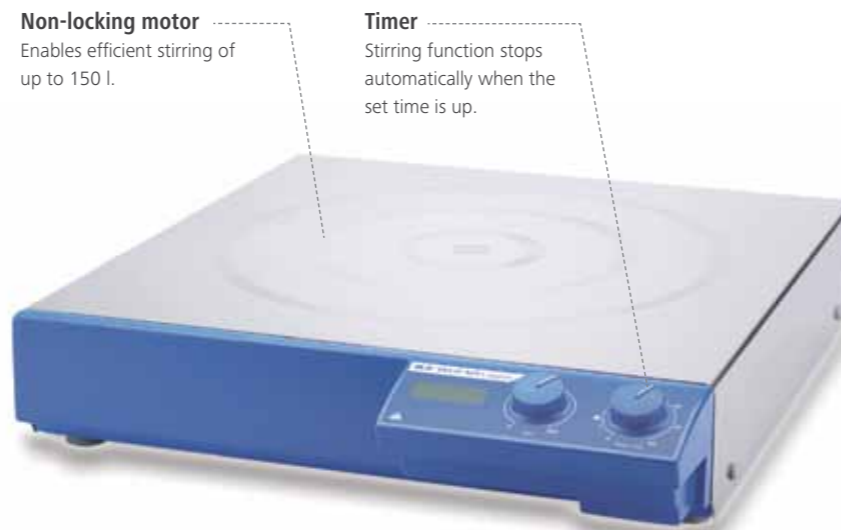
3368000

## Technical data

Stirring quantity (H <sub>2</sub> O)	0,8 l
Motor rating input / output	5 / 3 W
Speed display	-
Speed range	15 – 1.500 rpm
Reversion of rotation direction (switchable)	every 30 seconds
Max. magnetic bar (L x Ø) mm	30 x 8 mm
<b>Set-up plate</b>	
Material	polyester
Dimensions	Ø 100 mm
<b>General data</b>	
Dimensions (W x D x H)	117 x 180 x 12 mm
Weight	0,3 kg
Protection class acc. to DIN EN 60529	IP 65
Ident. No.	3907500

# Magnetic stirrers without heating

Please find required accessories on [www.ika.com](http://www.ika.com)



**Non-locking motor**  
Enables efficient stirring of up to 150 l.

**Timer**  
Stirring function stops automatically when the set time is up.



**Ceramic plate**  
Excellent chemical resistance to acids, bases, and solvents.

**Elevated control panel**  
For protection against leaking liquids.



## Maxi MR 1 digital IKAMAG®

Powerful magnetic stirrer without heating in a flat, sturdy stainless steel casing for stirring quantities of up to 150 liters.

- Infinitely variable speed
- Digital LED speed display



## C-MAG MS 4 IKAMAG®

5 l  
15 / 1,5 W  
scale  
30 x 8 mm

glass ceramic  
100 x 100 mm

150 x 260 x 105 mm  
3 kg  
IP 21  
3582200

## C-MAG MS 7 IKAMAG®

10 l  
15 / 1,5 W  
scale  
80 x 10 mm

glass ceramic  
180 x 180 mm

220 x 330 x 105 mm  
5 kg  
IP 21  
3582400

## C-MAG MS 10 IKAMAG®

The glass ceramic set-up plate offers excellent chemical resistance.

- Powerful motor
- Elevated control panel for protection against leaking liquids

15 l  
15 / 1,5 W  
scale  
80 x 10 mm

glass ceramic  
260 x 260 mm

300 x 415 x 105 mm  
6 kg  
IP 21  
3582600

### Technical data

Stirring quantity (H <sub>2</sub> O)	5 l
Motor rating input / output	14 / 4 W
Speed range	0 - 1.100 rpm
Max. magnetic bar (L x Ø)	50 x 8 mm
<b>Set-up plate</b>	
Material	stainless steel (AISI 304)
Dimensions	140 x 120 mm
<b>General data</b>	
Dimensions (W x D x H)	140 x 200 x 75 mm
Weight	1,4 kg
Protection class acc. to DIN EN 60529	IP 21
Ident. No.	2812000

## KMO 2 basic IKAMAG®

5 l  
14 / 4 W  
0 - 1.100 rpm  
50 x 8 mm

stainless steel (AISI 304)  
140 x 120 mm

140 x 200 x 75 mm  
1,4 kg  
IP 21  
2812000

## Midi MR 1 digital IKAMAG®

50 l  
70 / 19 W  
0 - 1.000 rpm  
80 x 10 mm

stainless steel (AISI 304)  
350 x 350 mm

360 x 430 x 110 mm  
9 kg  
IP 21  
2621900

150 l  
80 / 35 W  
0 - 600 rpm  
155 x 27 mm

stainless steel (AISI 304)  
500 x 500 mm

505 x 585 x 110 mm  
16 kg  
IP 21  
2621800

# Electronic overhead stirrers

Please find required accessories on [www.ika.com](http://www.ika.com)

## Push-through agitator shaft

Enables the customization of the stirring tool's length to fit the vessel.

## Digital display

Precise monitoring of set and actual speeds. Errors and deviations are displayed.

## Slim casing

Enables mounting on a variety of apparatus, for example: a preparative set-up with a three-necked flask.



Integrated torque trend display for viscosity control.

## EUROSTAR digital

Laboratory stirrer that can be used up to the medium viscosity range. A microprocessor control system guarantees a constant speed.

### Technical data

Stirring quantity (H <sub>2</sub> O)	10 l
Max. viscosity	10.000 mPas
Motor rating input / output	75 / 55 W
Max. torque at chuck	40 Ncm
Speed range	40 – 1.200 rpm
Speed display	scale (1 – 10)
Chuck range	0,5 – 10 mm
Diameter / length of extension arm	13 / 160 mm
<b>General data</b>	
Dimensions	80 x 190 x 222 mm
Weight	2,8 kg
Interface	–
Torque measurement	–
Ident. No.	2572100

### RW 16 basic

Stirring quantity (H <sub>2</sub> O)	10 l
Max. viscosity	10.000 mPas
Motor rating input / output	75 / 55 W
Max. torque at chuck	40 Ncm
Speed range	40 – 1.200 rpm
Speed display	scale (1 – 10)
Chuck range	0,5 – 10 mm
Diameter / length of extension arm	13 / 160 mm
<b>General data</b>	
Dimensions	80 x 190 x 222 mm
Weight	2,8 kg
Interface	–
Torque measurement	–
Ident. No.	2482000

Stirring quantity (H <sub>2</sub> O)	20 l
Max. viscosity	10.000 mPas
Motor rating input / output	75 / 55 W
Max. torque at chuck	30 Ncm
Speed range	50 – 2.000 rpm
Speed display	digital
Chuck range	0,5 – 10 mm
Diameter / length of extension arm	13 / 160 mm
<b>General data</b>	
Dimensions	80 x 190 x 222 mm
Weight	2,8 kg
Interface	–
Torque measurement	–
Ident. No.	2482000

### EUROSTAR power basic

Stirring quantity (H <sub>2</sub> O)	40 l
Max. viscosity	50.000 mPas
Motor rating input / output	130 / 110 W
Max. torque at chuck	60 Ncm
Speed range	50 – 2.000 rpm
Speed display	scale
Chuck range	0,5 – 10 mm
Diameter / length of extension arm	16 / 200 mm
<b>General data</b>	
Dimensions	80 x 190 x 253 mm
Weight	3,8 kg
Interface	analog
Torque measurement	–
Ident. No.	2572200

### EUROSTAR power control-visc

Stirring quantity (H <sub>2</sub> O)	40 l
Max. viscosity	50.000 mPas
Motor rating input / output	130 / 110 W
Max. torque at chuck	60 Ncm
Speed range	50 – 2.000 rpm
Speed display	digital
Chuck range	0,5 – 10 mm
Diameter / length of extension arm	16 / 200 mm
<b>General data</b>	
Dimensions	80 x 190 x 253 mm
Weight	3,8 kg
Interface	RS 232 / analog
Torque measurement	trend
Ident. No.	2600000

### EUROSTAR power control-visc P1

Stirring quantity (H <sub>2</sub> O)	60 l
Max. viscosity	70.000 mPas
Motor rating input / output	153 / 134 W
Max. torque at chuck	100 Ncm
Speed range	50 – 1.200 rpm
Speed display	digital
Chuck range	0,5 – 10 mm
Diameter / length of extension arm	16 / 200 mm
<b>General data</b>	
Dimensions	80 x 190 x 253 mm
Weight	4 kg
Interface	RS 232 / analog
Torque measurement	trend
Ident. No.	3330000

### EUROSTAR power control-visc P4

Stirring quantity (H <sub>2</sub> O)	40 l
Max. viscosity	100.000 mPas
Motor rating input / output	130 / 110 W
Max. torque at chuck	200 Ncm
Speed range	14 – 530 rpm
Speed display	digital
Chuck range	0,5 – 10 mm
Diameter / length of extension arm	16 / 200 mm
<b>General data</b>	
Dimensions	80 x 190 x 330 mm
Weight	4,9 kg
Interface	RS 232 / analog
Torque measurement	trend
Ident. No.	2850000

### EUROSTAR power control-visc P7

Stirring quantity (H <sub>2</sub> O)	40 l
Max. viscosity	150.000 mPas
Motor rating input / output	130 / 110 W
Max. torque at chuck	380 Ncm
Speed range	8 – 290 rpm
Speed display	digital
Chuck range	0,5 – 10 mm
Diameter / length of extension arm	16 / 200 mm
<b>General data</b>	
Dimensions	80 x 190 x 330 mm
Weight	4,9 kg
Interface	RS 232 / analog
Torque measurement	trend
Ident. No.	2850700

### EUROSTAR power control-visc 6000

Stirring quantity (H <sub>2</sub> O)	20 l
Max. viscosity	10.000 mPas
Motor rating input / output	130 / 110 W
Max. torque at chuck	15 Ncm
Speed range	150 – 6.000 rpm
Speed display	digital
Chuck range	fix
Diameter / length of extension arm	16 / 220 mm
<b>General data</b>	
Dimensions	80 x 190 x 317 mm
Weight	4,8 kg
Interface	RS 232 / analog
Torque measurement	trend
Ident. No.	3460000

# Mechanical overhead stirrers

Please find required accessories on [www.ika.com](http://www.ika.com)



**RW 20 digital**

**Technical data**

Stirring quantity (H <sub>2</sub> O)	20 l
Max. viscosity	10.000 mPas
Motor rating input / output	70 / 35 W
Output at stirring shaft	26 W
Max. torque at chuck (per 100 rpm)	150 Ncm
Speed range I (per 50 Hz)	60 – 500 rpm
Speed range II (per 50 Hz)	240 – 2.000 rpm
Speed display	digital
Chuck range	0,5 – 10 mm
Diameter / length of extension arm	13 mm / 160 mm
<b>General data</b>	
Dimensions (W x D x H)	88 x 212 x 294 mm
Weight	3,1 kg
Ident. No.	3593000



**RW 28 basic**

Dual-speed range makes it suitable for highly-viscous media and intense mixing. Push-through stirring tools. Special motor overheating protection by means of a self-locking temperature limiter.

80 l
50.000 mPas
220 / 90 W
90 W
900 Ncm
60 – 400 rpm
240 – 1.400 rpm
scale
1 – 10 mm
16 mm / 145 mm
123 x 252 x 364 mm
7,4 kg
2760000



**RW 47 D**

For batches of up to 200 liters (H<sub>2</sub>O). Powerful IKA® stirrer for laboratories, pilot plants, and small-scale production. Two speed ranges for highly-viscous media and intensive mixing. Stand not included in delivery.

200 l
100.000 mPas
513 / 370 W
300 W
3.000 Ncm
57 – 275 rpm
275 – 1.300 rpm
scale
3 – 16 mm
–
145 x 340 x 445 mm
15 kg
1602000

**Technical data**

Shaking movement	orbital
Orbital diameter	4,5 mm
Max. shaking weight (with attachment)	0,1 kg
Motor rating input / output	1,2 / 0,8 W
Permissible ON time	100 %
Speed range	2.800 rpm (fixed)
Speed display	–
Timer Swich	–
<b>General data</b>	
Dimensions (W x D x H)	Ø 100 x 70 mm
Weight	0,55 kg
Permissible ambient temperature	5 – 40 °C
Interface	–
Ident. No.	3365000

**lab dancer**

orbital
4,5 mm
0,1 kg
1,2 / 0,8 W
100 %
2.800 rpm (fixed)
–
–
Ø 100 x 70 mm
0,55 kg
5 – 40 °C
–
3365000

**MS 3 basic**

orbital
4,5 mm
0,5 kg
10 / 8 W
100 %
0 – 3.000 rpm
scale
–
148 x 205 x 63 mm
2,9 kg
5 – 40 °C
–
3617000

**MS 3 digital**

orbital
4,5 mm
0,5 kg
10 / 8 W
100 %
0 – 3.000 rpm
scale
1 s – 999 min
148 x 205 x 63 mm
2,9 kg
5 – 40 °C
–
3319000

**VORTEX Genius 3**

Vortex shaker suitable for short-time operation (touch function), activated by pressing the shaker attachment. Can also be used for continuous operation.



**Variety of accessories**

Different applications easily handled with three interchangeable attachments and seven inserts.

**Wide speed range**

Enables intensive mixing, even for small vessels.





# Orbital shakers

Attachments are not included in delivery.  
Please find required accessories on [www.ika.com](http://www.ika.com)



## STICKMAX

New universal adhesive mat for the fixing clip attachments of the KS 130, KS/HS 260, KS/HS 501 and KS 4000 shakers.

- Ideal for frequently changing vessel types and sizes
- Self-adhesive
- Devices can be easily removed by side tilting movement
- Suitable for disinfection
- Peel-away strength required: 5 N/cm<sup>2</sup>
- Dimensions (L x W): 200 x 200 mm

Ident. No. 3920000



### Technical data

Shaking movement	orbital
Orbital diameter	4 mm
Max. shaking weight (with attachment)	2 kg
Motor rating input / output	35 / 13,2 W
Permissible ON time	100%
Speed range	0 – 2.200 rpm
Speed display	scale
Timer Swich	–
<b>General data</b>	
Dimensions (W x D x H)	157 x 247 x 130 mm
Weight	6,1 kg
Permissible ambient temperature	5 – 40 °C
Interface	–
Ident. No.	2819000

### VXR basic Vibrax®

orbital
4 mm
2 kg
35 / 13,2 W
100%
0 – 2.200 rpm
scale
–
157 x 247 x 130 mm
6,1 kg
5 – 40 °C
–
2819000

### MTS 2/4 digital

orbital
3 mm
2 or 4 microtiter plates
35 / 13,2 W
100%
0 – 1.100 rpm
scale
∞ / 1 – 99 min
185 x 320 x 105 mm
2,7 kg
5 – 40 °C
–
3208000

### KS 130 basic

orbital
4 mm
2 kg
45 / 10 W
100%
80 – 800 rpm
LED line
∞ / 5 – 50 min
270 x 316 x 98 mm
8,8 kg
5 – 50 °C
–
2980000

### KS 130 control

orbital
4 mm
2 kg
45 / 10 W
100%
80 – 800 rpm
digital
∞ / 0 – 9 h 59 min
270 x 316 x 98 mm
9,8 kg
5 – 50 °C
RS 232 / analog
2980100

### KS 260 basic

orbital
10 mm
7,5 kg
45 / 10 W
100%
20 – 500 rpm
LED line
∞ / 5 – 50 min
360 x 420 x 98 mm
8,5 kg
5 – 50 °C
–
2980200

### KS 260 control

Additionally with a digital display for monitoring the speed and the timer.

orbital
10 mm
7,5 kg
45 / 10 W
100%
10 – 500 rpm
digital
∞ / 9 h 59 min
360 x 420 x 98 mm
8,8 kg
5 – 50 °C
RS 232 / analog
2980300

### KS 501 digital

Flat laboratory shaker with a large set-up plate.

orbital
30 mm
15 kg
70 / 19 W
100%
0 – 300 rpm
digital
∞ / 1 – 56 min
505 x 585 x 120 mm
26 kg
5 – 50 °C
–
2526400

### KS 4000 i control

Incubator shaker with an innovative design for unsupervised operation, in a temperature-controlled environment. Comes with an external PT 1000 sensor which enables temperature control in the medium.

- Temperature range: RT + 5 °C to 80 °C
- Heat output: 1.000 W
- Temperature stability: 0,1 K

orbital
20 mm
20 kg
82 / 24 W
100%
10 – 500 rpm
digital
∞ / 1 s - 999 h
580 x 750 x 525 mm
50 kg
15 – 32 °C
RS 232
3510000

### KS 4000 ic control with built-in cooling coil

This version of the incubator shaker with a built-in cooling spiral enables the connection to an external cooling unit for working below room temperature.

- Operating temperature range with a max. flow temperature: RT -10 °C to 80 °C
- Cooling connection for hose: ø10 mm

orbital
20 mm
20 kg
82 / 24 W
100%
10 – 500 rpm
digital
∞ / 1 s - 999 h
580 x 750 x 525 mm
55 kg
15 – 32 °C
RS 232
3510100

**5** Year warranty\*

### Temperature sensor connection

Enables the connection of a temperature sensor for controlling the medium's temperature.

### Tempering

Highly precise temperature control all throughout the incubation cover.

### A variety of accessories

Can be used with a variety of vessel sizes and types.

### Digital display

Numerous functions such as speed, temperature, and timer can therefore be monitored and controlled.

### Interface

RS 232 interface to control the incubator shaker and for documentation of all parameters.



\* 2 + 3 years after registering at [www.ika.com/register](http://www.ika.com/register), glassware and wearing parts excluded

# Horizontal shakers

Attachments are not included in delivery.  
Please find required accessories on [www.ika.com](http://www.ika.com)

**A variety of accessories**  
Can be used with a variety of vessel sizes and types.

**Digital display**  
Numerous functions such as speed and timer can be monitored and controlled.



## HS 260 control

Compact, flat laboratory shaker with an ideal swivel motion, for a maximum shaking weight of up to 7.5 kg.



### HS 260 basic

#### Technical data

Shaking movement	reciprocating
Orbital diameter	20 mm
Max. shaking weight (with attachment)	7,5 kg
Motor rating input / output	45 / 10 W
Permissible ON time	100%
Speed range	20 – 300 rpm
Speed display	LED line
Timer	∞ / 5 – 50 min

#### General data

Dimensions (W x D x H)	360 x 420 x 100 mm
Weight	8,5 kg
Permissible ambient temperature	5 – 50 °C
Interface	–
Ident. No.	3066600

Shaking movement	reciprocating
Orbital diameter	20 mm
Max. shaking weight (with attachment)	7,5 kg
Motor rating input / output	45 / 10 W
Permissible ON time	100%
Speed range	10 – 300 rpm
Speed display	digital
Timer	∞ / 9 h 59 min

Dimensions (W x D x H)	360 x 420 x 100 mm
Weight	8,8 kg
Permissible ambient temperature	5 – 50 °C
Interface	RS 232 / analog
Ident. No.	3066700

### HS 501 digital

Shaking movement	reciprocating
Orbital diameter	30 mm
Max. shaking weight (with attachment)	15 kg
Motor rating input / output	70 / 19 W
Permissible ON time	100%
Speed range	0 – 300 rpm
Speed display	digital
Timer	∞ / 1 – 56 min

Dimensions (W x D x H)	505 x 585 x 120 mm
Weight	26 kg
Permissible ambient temperature	5 – 50 °C
Interface	–
Ident. No.	2527000

# Dispersers

Please find required accessories on [www.ika.com](http://www.ika.com)

## Three phase motor

High-performance dispersing instrument designed for typical pilot plant station volumes from 2 to 50 l (H<sub>2</sub>O).



#### Technical data

Motor rating input / output	125 / 75 W
Volume range (H <sub>2</sub> O)	0,5 – 100 ml
Speed adjustment	stepless
Speed range	8.000 – 30.000 rpm
Speed display	scale
Noise motor	65 dB (A)
Overload protection	yes

#### General data

Dimensions (W x D x H)	46 x 57 x 201 mm
Weight	0,4 kg
Perm. ambient temperature	5 – 40 °C
Permissible relative humidity	80%
Protect. class DIN EN 60529	IP 30
Ident. No.	3420000

### T 10 basic ULTRA-TURRAX®

Motor rating input / output	500 / 300 W
Volume range (H <sub>2</sub> O)	1 – 1.500 ml
Speed adjustment	stepless
Speed range	3.500 – 24.000 rpm
Speed display	scale
Noise motor	73 dB (A)
Overload protection	yes

Dimensions (W x D x H)	65 x 80 x 240 mm
Weight	1,6 kg
Perm. ambient temperature	5 – 40 °C
Permissible relative humidity	80%
Protect. class DIN EN 60529	IP 20
Ident. No.	3561000

### T 18 basic ULTRA-TURRAX®

Motor rating input / output	500 / 300 W
Volume range (H <sub>2</sub> O)	1 – 2.000 ml
Speed adjustment	stepless
Speed range	3.400 – 24.000 rpm
Speed display	digital
Noise motor	73 dB (A)
Overload protection	yes

Dimensions (W x D x H)	65 x 80 x 240 mm
Weight	1,6 kg
Perm. ambient temperature	5 – 40 °C
Permissible relative humidity	80%
Protect. class DIN EN 60529	IP 20
Ident. No.	3565000

### T 25 digital ULTRA-TURRAX®

Motor rating input / output	1.100 / 700 W
Volume range (H <sub>2</sub> O)	0,25 – 30 l
Speed adjustment	stepless
Speed range	500 – 10.000 rpm
Speed display	scale
Noise motor	72 dB (A)
Overload protection	yes

Dimensions (W x D x H)	125 x 120 x 367 mm
Weight	6 kg
Perm. ambient temperature	5 – 40 °C
Permissible relative humidity	80%
Protect. class DIN EN 60529	IP 20
Ident. No.	3783500

### T 50 basic ULTRA-TURRAX®

Motor rating input / output	1.800 / 1.500 W
Volume range (H <sub>2</sub> O)	2 – 50 l
Speed adjustment	–
Speed range	fixed 7.200 rpm
Speed display	–
Noise motor	75 dB (A)
Overload protection	yes

Dimensions (W x D x H)	190 x 580 x 380 mm
Weight	28 kg
Perm. ambient temperature	5 – 40 °C
Permissible relative humidity	80%
Protect. class DIN EN 60529	IP 54
Ident. No.	1602800

### T 65 D ULTRA-TURRAX®

Motor rating input / output	1.800 / 1.500 W
Volume range (H <sub>2</sub> O)	2 – 50 l
Speed adjustment	–
Speed range	fixed 7.200 rpm
Speed display	–
Noise motor	75 dB (A)
Overload protection	yes

Dimensions (W x D x H)	190 x 580 x 380 mm
Weight	28 kg
Perm. ambient temperature	5 – 40 °C
Permissible relative humidity	80%
Protect. class DIN EN 60529	IP 54
Ident. No.	1602800

# Dispersers

Please find required accessories on [www.ika.com](http://www.ika.com)

## Patented tube system

Disposable tubes for stirring, dispersing, and grinding.

## Digital timer switch

Experiment time can be set from 1 second to 29 minutes.

## OLED display

Clear and multilingual display.



## UTTD ULTRA-TURRAX® Tube Drive

One-of-a-kind and universal disposable dispersing system with hermetically sealable disposable sample tubes. For safe processing of infectious, toxic sample materials and strong-smelling substances.

- Dispersing, stirring, and grinding with a single drive unit
- No possibility of cross-contamination
- High level of user safety
- Suitable for individual use and use in series
- Anti-locking function
- Chemical-resistant plastic
- Simple and safe disposal

## UTTD control ULTRA-TURRAX® Tube Drive control

**NEW**

The new control version offers the following additional advantages:

- USB interface for experiment control and documentation
- Collecting tray for protection against leaking liquids
- Simple and precise menu navigation thanks to the OLED display
- Programmable sample conditions (library)

## Turbo key

For short-term, intensive stirring, dispersing, and grinding.

## Reverse operation

Adjustable reverse rotating direction.

## ULTRA-TURRAX® Workstation

You are optimally equipped and ready to go with the UTTD case.



## Included with delivery

ULTRA-TURRAX Tube Drive	1	-
ULTRA-TURRAX Tube Drive control	-	1
ST-20 Tube with stirring device	2	2
DT-20 Tube with rotor-stator element	2	1
BMT-20 G / S Tube for grinding with glass (G) or stainless steel balls (S)	2	1
Removal hook for removal of rotor-stator element	1	1
Power supply	1	1
Ident. No. Workstation	3645000	3827500

## UTTD Workstation

## UTTD control Workstation



Description	ST-20 Tube with stirring device	DT-20 Tube with rotor stator element	BMT-20 S Tube for grinding with stainless steel balls (S)	BMT-20 G Tube for grinding with glass balls (G)
Ident. No.	3703000	3703100	3703200	3703300
Description	ST-50 Tube with stirring device	DT-50 Tube with rotor stator element	BMT-50 S Tube for grinding with stainless steel balls (S)	BMT-50 G Tube for grinding with glass balls (G)
Ident. No.	3699500	3699600	3699700	3699800

## Note:

All tubes are also available with a pierceable membrane and gamma-sterilized. For additional information see: [www.ika.com](http://www.ika.com).



## Technical data

Motor rating input / output	20 / 17 W
Speed range / turbo speed	300 – 6.000 rpm
Display	LED (timer)
Speed display	scale (0 - 9)
Timer	1 – 59 s (300 – 6.000 rpm) 1 – 29 min (300 – 4.000 rpm)

Reversal of rotating direction interval	-
---	---

## General Data

Dimensions (W x D x H)	100 x 160 x 40 mm
Weight	0,75 kg
Protection class acc. to DIN EN 60529	IP 20
Ident. No. Single Unit	3646000

Motor rating input / output	20 / 17 W
Speed range / turbo speed	400 - 6.000 rpm / 8.000 rpm
Display	OLED
Speed display	digital
Timer	10 s - 30 min (infinitely adjustable)

Reversal of rotating direction interval	10 - 60 s
---	-----------

Dimensions (W x D x H)	122 x 178 x 48 mm
Weight	1,0 kg
Protection class acc. to DIN EN 60529	IP 20
Ident. No. Single Unit	4135300

# Hotplates

Please find required accessories on [www.ika.com](http://www.ika.com)

# Heating baths & Thermostats

Please find required accessories on [www.ika.com](http://www.ika.com)

**Ceramic heating plate**  
Excellent chemical resistance to acids, bases, and solvents.

**Digital display**  
Precise monitoring of the temperature by means of a digital display.

**Contact thermometer bushing**  
Bushing according to DIN 12878 for connecting a digital contact thermometer. ETS-D5 is recommended.

**Carrying handles**  
Laterally arranged carrying handles and drip edge allow safe handling of the heating bath and offer protection from burns.

**Digital display**  
Enables precise temperature control.



## C-MAG HP 7 IKATHERM®

New glass ceramic heating plate, which offers excellent chemical resistance.

- Fixed safety circuit of 550 °C
- Hot Top indicator warning to prevent burns

## C-MAG HP 4 IKATHERM®

### Technical data

Heat output	250 W
Heating plate temperature range	50 - 500 °C
Safety circuit fixed	550 °C
Setting accuracy	± 10 K
Control accuracy with sensor	–
Temperature display	digital

### Heating plate

Material	glass ceramic
Dimensions	100 x 100 mm

### General data

Dimensions (W x D x H)	150 x 260 x 105 mm
Weight	3 kg
Permissible ambient temperature	5 – 40 °C
Ident. No.	3581600

1.000 W
50 - 500 °C
550 °C
± 10 K
ETS-D5 ± 0,5 K
digital

## C-MAG HP 10 IKATHERM®

1.500 W
50 - 500 °C
550 °C
± 10 K
ETS-D5 ± 0,5 K
digital

glass ceramic
260 x 260 mm

300 x 415 x 105 mm
6 kg
5 – 40 °C
3582000

### Technical data

Heat output	1.500 W
Temperature range	25 – 100 °C
Setting tolerance	–
Deviation (3 l H <sub>2</sub> O, 90 °C)	–
Safety class	yes (acc. to DIN 12876)
Temperature display	scale

### Stirring function

Stirring function	–
Speed range	–

### General data

Useful volume	–
Weight	2,3 kg
Permissible ambient temperature	5 – 40 °C
Ident. No.	3164000

## EH 4 basic Immersion thermostat

1.500 W
25 – 100 °C
–
–
yes (acc. to DIN 12876)
scale

## HBR 4 digital Heating bath

1.000 W
RT – 200 °C
± 1 K
± 1 K
2 (acc. to DIN 12877)
digital

yes
100 – 800 rpm

4 l
4,4 kg
5 – 40 °C
2602300

## HB 10 digital Heating bath

Digital heating bath with easy operation and numerous safety functions. Three adjustable operating modes enable optimal user-specific setting of the bath.

1.350 W
RT – 180 °C
± 1 K
± 1 K
2 (acc. to DIN 12877)
digital

–
–

3 l
3,0 kg
5 – 40 °C
3642000

# Rotary evaporators

Please find required accessories on [www.ika.com](http://www.ika.com)

## Condenser

Optimized cooling coil configuration for high recovery rates.

## Motorized lift

Lifting and lowering of the glassware at the touch of a button.

## Free choice of angle

The drive's angle can be adjusted so that the evaporating flask can be optimally placed into the heating bath.

## Solvent-resistant and abrasion-proof seal

Reduces spare part costs.

## Drive rotates clockwise and counter-clockwise

Enables better mixing and more efficient drying of samples.

## Lift raised automatically in the event of a power outage

Prevents sample "bumping".

## Endpoint positioning

Prevents glass from breaking when evaporation flask is lowered into the heating bath.

## Digital display

Precise monitoring of all parameters with digital displays.

**NEW**

## Included in delivery

RV 10.4002 Magnetic valve, used to connect your vacuum system to the RV 10 control.



RV 10 control

## RV 10 digital

The RV10 digital is a combination of performance, reliability and versatility. Digital temperature is precisely controlled. The perfectly coordinated data transfer between heating bath and drive unit, as well as the option of remote operation from a PC, ensure results that can be reproduced any time.

## RV 10 control

The RV 10 control is a rotary evaporator system that can be operated fully automatically. The integrated software allows for numerous adjustments to be saved as well as user-specific configurations to be stored.

### Packages with glassware

RV 10 digital V

RV 10 control V

### Cooler type

RV 10 digital V-C

RV 10 control V-C

V = vertical

V = vertical

V-C = vertical coated

V-C = vertical coated

D = diagonal

D = diagonal

D-C = diagonal, coated

D-C = diagonal, coated

1.200 cm<sup>2</sup>

1.200 cm<sup>2</sup>

### Cooling surface

### Drive

Motor type

brushless DC drive motor

brushless DC drive motor

Speed range

20 to 280 rpm

20 to 280 rpm

Clockwise and counter-clockwise interval operation

yes

yes

Smooth start

yes

yes

Head angle adjustable

0 to 45°

0 to 45°

Stroke displacement

140 mm, motorized

140 mm, motorized

Setting of lower end stop

60 mm, contact-free

60 mm, contact-free

Vacuum controller

no (accessory)

integrated

### Heating bath

Temperature range

HB 10 digital

HB 10 control

RT to 180 °C

RT to 180 °C

RT to 180 °C

Heating power

1.300 W

1.300 W

Controller

micro controller

micro controller

Setting accuracy

1 K

1 K

Control deviation

± 1 K

± 1 K

### Required accessories for an existing vacuum

In-house vacuum (industrial vacuum source for many users)

-

RV 10.4001 Magnetic valve (3902600)

Laboratory vacuum pump (multiple connections)

-

RV 10.4002 Magnetic valve (3880300)

Diaphragm vacuum pump (one single connection)

-

RV 10.4002 Magnetic valve (3880300)

### General data

Dimensions without glassware (W x D x H)

530 x 410 x 570 mm

530 x 410 x 570 mm

RV 10 diagonal (W x D x H)

890 x 410 x 670 mm

890 x 410 x 670 mm

RV 10 vertical (W x D x H)

680 x 410 x 990 mm

680 x 410 x 990 mm

Weight of evaporator incl.

21,5 kg

21,5 kg

heating bath without glass parts

### Ident. No.

RV 10 Package with vertical glassware

8022500

8022700

RV 10 Package with vertical glassware, coated

8023100

8023300

RV 10 FLEX Package without glassware

8031500

8031600

5 Year warranty\*



2009

\* 2 + 3 years after registering at [www.ika.com/register](http://www.ika.com/register), glassware and wearing parts excluded

# Mills

Please find required accessories on [www.ika.com](http://www.ika.com)



## Analytical mill

Batch mill for impact and cutting grinding by means of interchangeable cutting and grinding tools. Various grinding chamber sizes enable the crushing of small volumes all the way up to 250 ml.



## Analytical mill

For low-loss, dry grinding of hard and brittle substances of up to 50 ml.



## Microfine grinder drive

Continuously working micro-fine grinder with a powerful drive and two changeable heads (not included).

### Technical data

Motor rating input / output	160 / 100 W
Speed range fixes	fixed 28.000 rpm
Useful volume	80 ml
Power-on time (ON / OFF)	1 min / 10 min
Overload protection	yes
Circumferential speed	53 m/s
Max. granularity of task	10 mm
Material grinding chamber	stainless steel (AISI 316L)
<b>General data</b>	
Dimensions (W x D x H)	85 x 85 x 240 mm
Weight	1,5 kg
Permissible ambient temperature	5 – 40 °C
Ident. No.	2900000

### A 11 basic

Motor rating input / output	180 / 80 W
Speed range fixes	20.000 rpm (fixed)
Useful volume	50 ml
Power-on time (ON / OFF)	5 min / 10 min
Overload protection	yes
Circumferential speed	57 m/s
Max. granularity of task	6 mm
Material grinding chamber	stainless steel (AISI 1.4301)
<b>General data</b>	
Dimensions (W x D x H)	120 x 225 x 105 mm
Weight	2,2 kg
Permissible ambient temperature	5 – 40 °C
Ident. No.	1603500

### A 10 basic

Motor rating input / output	260 / 620
Speed range fixes	20.000 rpm (fixed)
Useful volume	250 ml
Power-on time (ON / OFF)	7 min / 10 min
Overload protection	yes
Circumferential speed	72 m/s
Max. granularity of task	7 mm
Material grinding chamber	stainless steel (AISI 316L)
<b>General data</b>	
Dimensions (W x D x H)	170 x 170 x 350 mm
Weight	6,6 kg
Permissible ambient temperature	5 – 40 °C
Ident. No.	1603600

### M 20

Batch mill suitable for low-loss, dry grinding of hard and brittle substances of up to 250 ml.

Motor rating input / output	1.000 / 500 W
Speed range fixes	3.000 – 6.500 rpm
Useful volume	max. 5 kg / h
Power-on time (ON / OFF)	120 min / 30 min
Overload protection	yes
Circumferential speed	22,5 m/s
Max. granularity of task	15 mm
Material grinding chamber	stainless steel (AISI 304)
<b>General data</b>	
Dimensions (W x D x H)	320 x 300 x 560 mm
Weight	9,7 kg + 2,2 kg
Permissible ambient temperature	5 – 40 °C
Ident. No.	2836000 + 2870900

### MF 10 basic Microfine grinder drive + MF 10.1 Cutting-grinding head

Cutting-grinding head for crushing brittle, hard materials.

Motor rating input / output	1.000 / 500 W
Speed range fixes	3.000 – 6.500 rpm
Useful volume	max. 5 kg / h
Power-on time (ON / OFF)	120 min / 30 min
Overload protection	yes
Circumferential speed	22,5 m/s
Max. granularity of task	15 mm
Material grinding chamber	stainless steel (AISI 304)
<b>General data</b>	
Dimensions (W x D x H)	320 x 300 x 450 mm
Weight	9,7 kg + 2,7 kg
Permissible ambient temperature	5 – 40 °C
Ident. No.	2836000 + 2871000

### MF 10 basic Microfine grinder drive + MF 10.2 Impact grinding head

Impact grinding head for crushing fibrous substances.

Motor rating input / output	1.000 / 500 W
Speed range fixes	3.000 – 6.500 rpm
Useful volume	max. 5 kg / h
Power-on time (ON / OFF)	120 min / 30 min
Overload protection	yes
Circumferential speed	31,4 m/s
Max. granularity of task	10 mm
Material grinding chamber	stainless steel (AISI 304)
<b>General data</b>	
Dimensions (W x D x H)	320 x 300 x 450 mm
Weight	9,7 kg + 2,7 kg
Permissible ambient temperature	5 – 40 °C
Ident. No.	2836000 + 2871000

We look forward to helping you find the perfect device for your application. Our Application Technology Lab consists of application specialists with longtime experience in sample processing.

Give us a call. Our **toll-free hotline number: 00 8000 4522777 (00 8000 IKAAPPS)\***

or send us an e-mail to: **applicationsupport@ika.de**

We will process your inquiry within 48 hours of receiving it.

You may also send us your sample. We will test it for you with a device suitable for your application - free of charge and within 48 hours!

More information can be found at: **www.ika.com**

There you will also find additional detailed information regarding prices and accessories as well as an application database.

\* Monday - Thursday from 8:30 am - 4:30 pm and Friday from 8:30 am - 3:30 pm



IKA®-Werke GmbH & Co. KG  
Janke & Kunkel-Str. 10  
79219 Staufen  
Germany

Tel. +49 7633 831-0  
Fax +49 7633 831-98

sales@ika.de  
www.ika.com

201101\_Product\_Overview\_EN\_wop



Designed  
to work perfectly

Subject to technical changes.